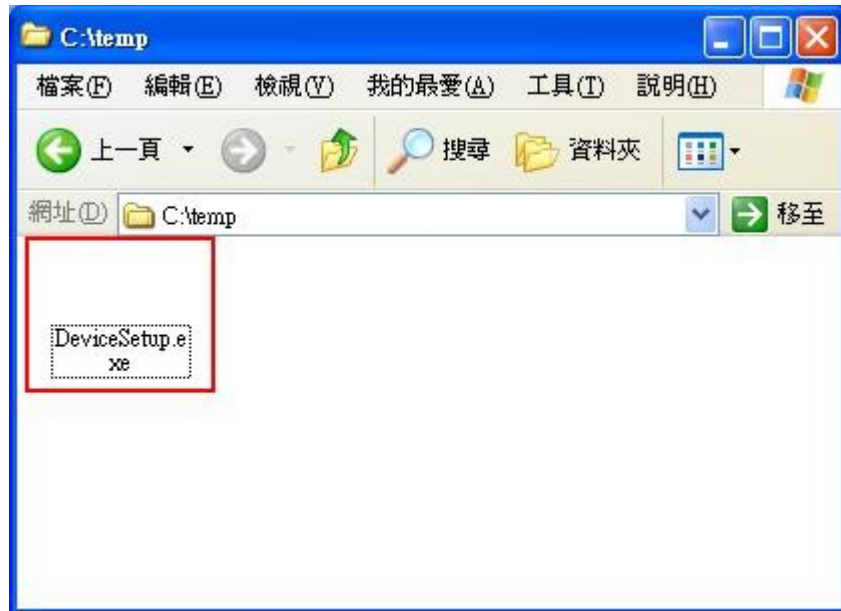


USER MANUAL FOR VFD 800 OPOS



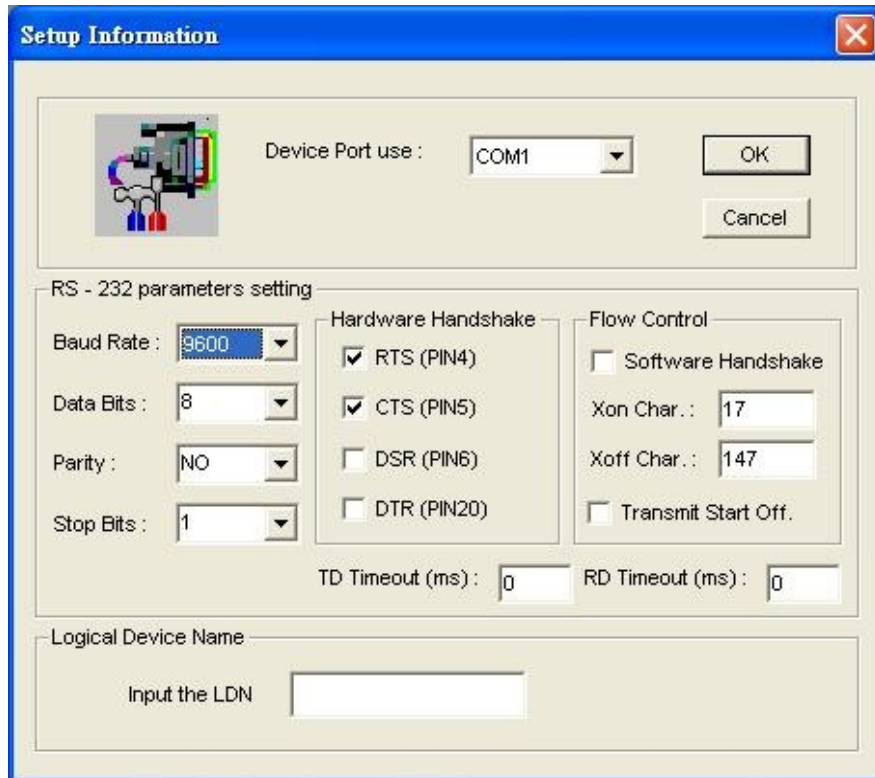
Picture 1

1. Double click on the DeviceSetup.exe.



Picture 2

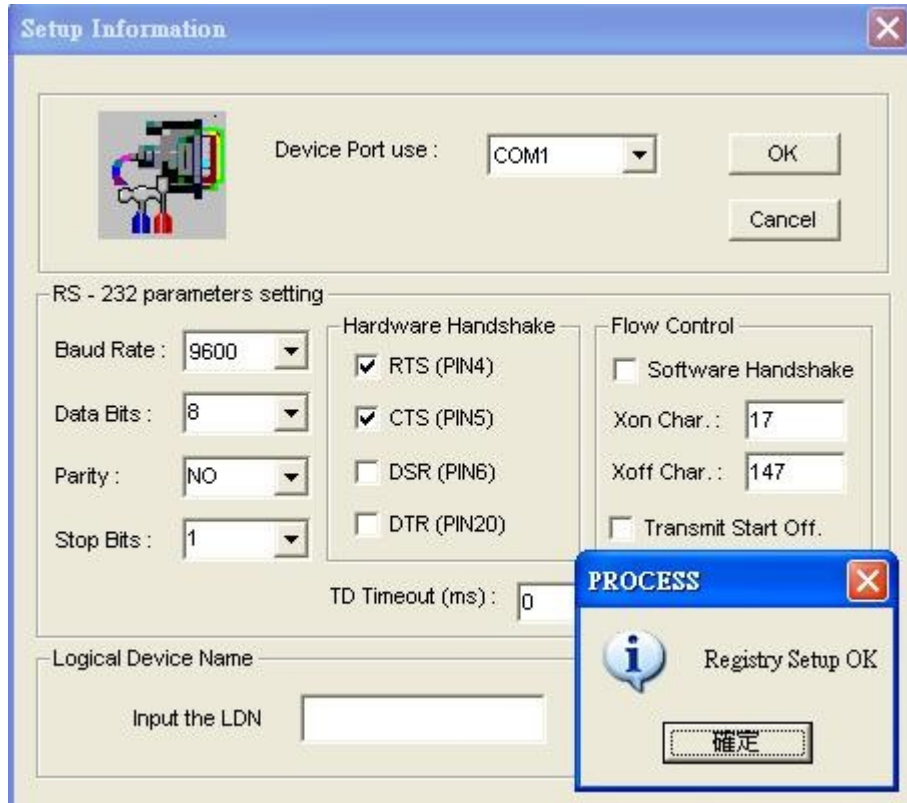
2. On OPOS Registry Setup. Please choose the interface of the VFD to LD220, then click Setup.



Picture 3

3. Please choose the correct com port is COM1. Baud Rate is 9600. Data Bits is 8. Parity is NO. Stop Bits is 1. Hardware Handshake please check RTS (PIN4) & RTS (PIN5). Flow Control Xon Char is 17 & Xoff Char is147. Then click OK on the top right corner.

Picture 4



4. You will see a message Registry Setup OK. Then click OK.