

BP6

Aluminium PC Box

Elegant & Reliable

BP6 is an ultra-slim embedded PC box made of die-casting aluminium and features a fan-less and ventless design. The BP6 can be a standalone controller unit mounted via a standard 100mm x 100mm VESA on to a wall, or behind a large display monitor to deliver high-graphics performance while consuming less power.



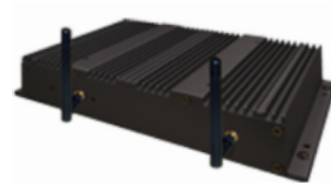
- VESA Mount 100 x 100 mm



- Easy-service HDD Door



- Flash Mounting Holes on Left & Right Sides



- Dual External Wireless Antenna Jack for Superior Performance

BP6**Specification**

CPU	Intel Bay Trail CPU Celeron J1900 2.4GHz	Intel Skylake U CPU 3955U 2.0GHz
Memory	1x DDR3L 1066/1333MHz SO-DIMM up to 8GB	1x DDR3L 1600MHz SO-DIMM up to 8GB
Storage	1x 2.5" SATA HDD or SSD or SSD module	1x 2.5" SATA HDD or SSD or SSD module
Graphic	Intel HD Graphics DX11 and OCL1.1	Intel HD Graphics DX12
Mini PCI-E Slot	1	1

I/O Ports (Optional)

2nd LAN	1	1
Antenna Hole	1	1
Parallel Port	1	1
Display Port	1	1
Audio Line-out	1	1

I/O Ports (Standard)

USB	1x USB3.0, 4x USB2.0	4x USB3.0, 2x USB2.0
Serial Port	3x RJ45 (powered RS232) (default 0V; COM1,COM2 0V/5V; COM3 0V/12V)	3x RJ45 (powered RS232) (default 0V; COM1,COM2 0V/5V; COM3 0V/12V)
LAN	1x RJ45	1x RJ45
Cash Drawer	1x RJ11 (12V/24V)	1x RJ11 (12V/24V)
VGA	1x DB15	1x DB15
DC Jack	1x 4 pin w/ lock	1x 4 pin w/ lock

Peripheral

Wireless LAN	802.11 b/g/n WLAN card & antenna (Option)	802.11 b/g/n WLAN card & antenna (Option)
--------------	---	---

Environment

Operating Temperature	0°C ~ 35°C (32°F ~ 95°F)	0°C ~ 35°C (32°F ~ 95°F)
Storage Temperature	-20°C ~ 60°C (-4°F ~ 140°F)	-20°C ~ 60°C (-4°F ~ 140°F)
Humidity	20% ~ 85% RH non-condensing	20% ~ 85% RH non-condensing

Electrical

Power Supply Input	65W/19V	90W/19V
--------------------	---------	---------

[Notice] : Specification are subject to change without notice