

# PL330 Technical Manual

## Change Interface Board

- 1) unscrew two screw. Ref : Fig 01
- 2) Unplug the interface card. Ref : Fig 02

## Change I/O Board

- 1) Unscrew ten screw. Ref : Fig 03
- 2) Unplug all the cable. Ref : Fig 04
- 3) On Base cover unscrew two screw. Ref : Fig 05
- 4) Remove the I/O board from the base cover. Ref : Fig 06
- 5) For remove the I/O board cover, unscrew five screw. Ref : Fig 07
- 8) I/O board and cover is remove. Ref : Fig 08



Fig 01

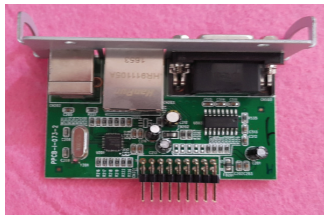


Fig 02



Fig 03

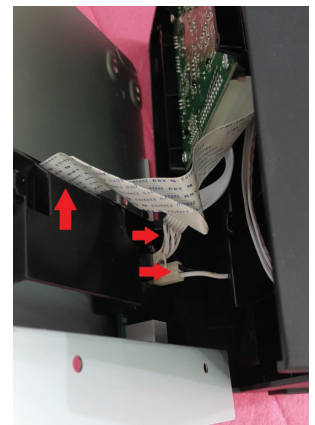


Fig 04



Fig 05

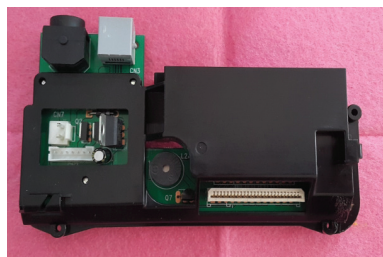


Fig 06

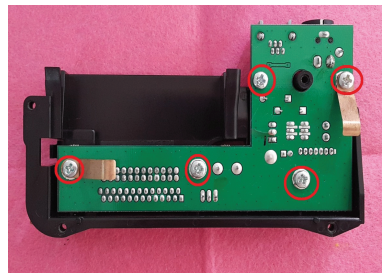


Fig 07

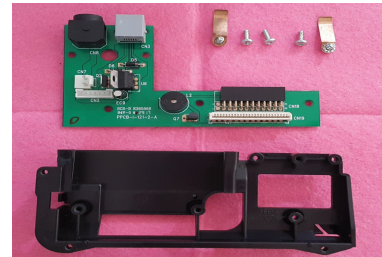


Fig 08

## Change Main Board

- 1) Unscrew four screw. Ref : Fig 09
- 2) Unplug all the connection. Ref : Fig 10
- 3) Remove main board. Ref : Fig 11

## Remove Top Cover and Body Cover.

- 1) Open the Top cover. Ref : Fig 12
- 2) Unscrew five screw at top cover. Ref : Fig 13
- 3) Remove Top cover. Ref : Fig 14
- 4) For remove Body cover, unscrew two screw. Ref : Fig 15

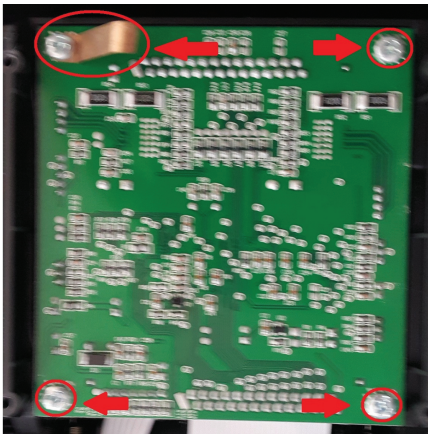


Fig 09

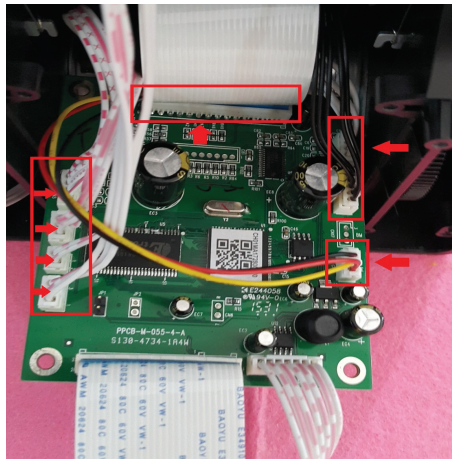


Fig 10

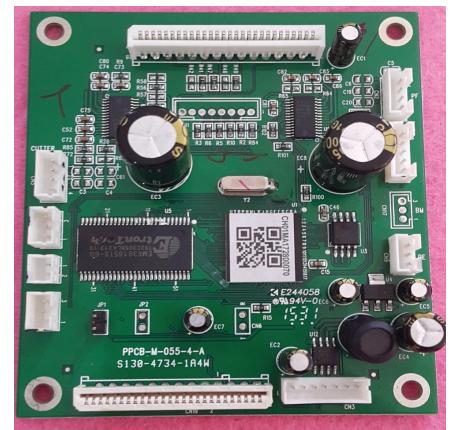


Fig 11



Fig 12



Fig 13



Fig 14



Fig 15



## Change Panel Board

- 1) After Remove body cover, unscrew two screw and connection on Panell board. Ref Fig 16
- 2) Panel Board is removed. Ref Fig 17

## Change L Shape, Gear and Sensor

### A) L Shape

- 1) Remove one scfew, and remove E-ring. Ref Fig 18

### B) Remove Gear

- 1) After remove L shape. Remove two E-ring on gear. Ref Fig 19
- 2) Gear is remove. Ref Fig 20

### C) Remove sensor.

- 1) Unscrew 3 screw for remove the sensor. Ref Fig 21
- 2) Two sensor is for cutter and one sensor is for top cover. Ref Fig 22

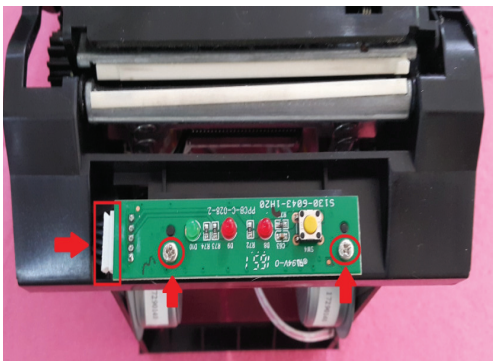


Fig 16

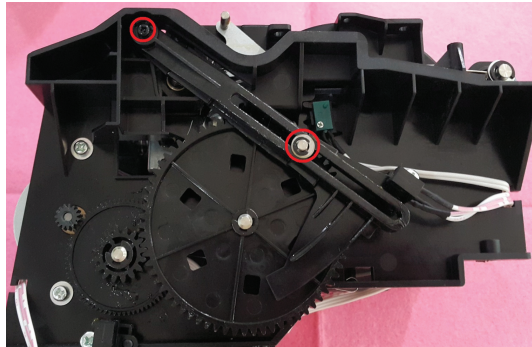


Fig 18



Fig 17

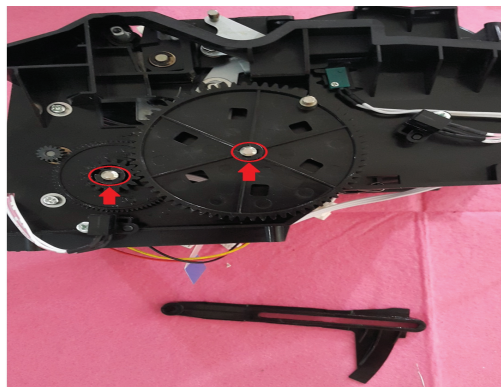


Fig 19



Fig 20

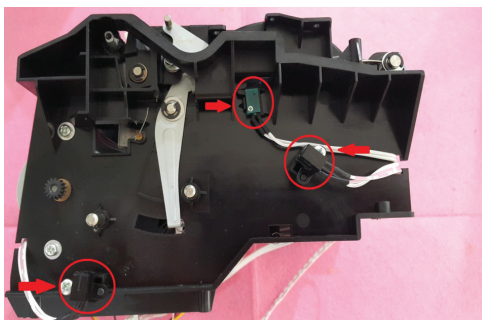


Fig 21

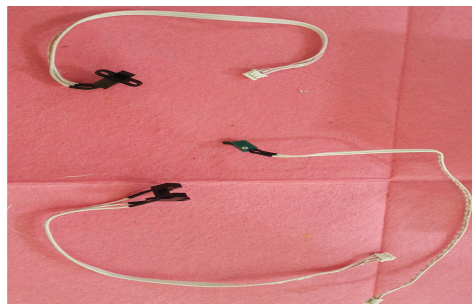


Fig 22

**CODE SOFT INTERNATIONAL INFORMATION CO. LTD**

Room 319,Block C,The NEW Generation Info Tech Park,Chuangye Road NO.139, Bao'An District, Shenzhen ,P.R.China.

Tel : +86-755 86539210 Email : [info@code-soft.com](mailto:info@code-soft.com) Website : [www.code-soft.com](http://www.code-soft.com)

## Change Cutter

Remark : Cutter have two part, Upper Cutter and Lower Cutter

- 1) At lower cutter, push the cutter from the chassis. Ref Fig 23
- 2) Remove left side first, and remove right hand. Ref Fig 24
- 3) For upper cutter, please careful the spring in the cutter. Ref fig 25
- 4) On left side and right side, need to push the cutter out of chassis. Ref Fig 27
- 5) Once cutter is remove, please makesure the spring direction. Ref Fig 28

## Change Platten Roller.

- 1) Remove Ering on right side and remove Gear on left side. Ref Fig 29
- 2) Platter roller is removed. Ref Fig 30

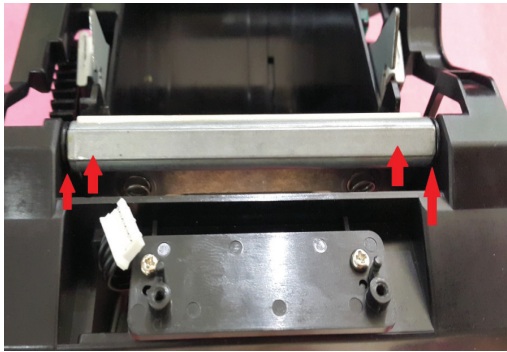


Fig 23

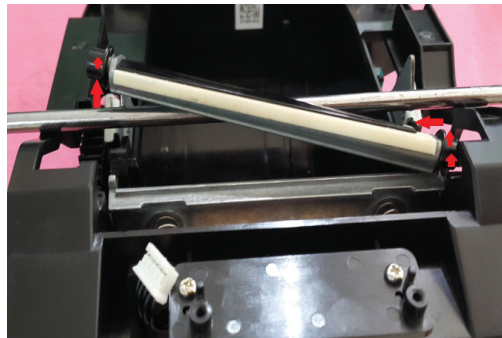


Fig 24

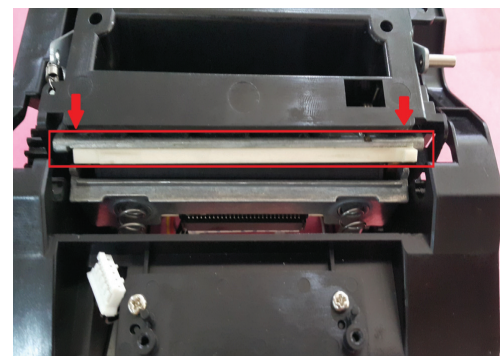


Fig 25

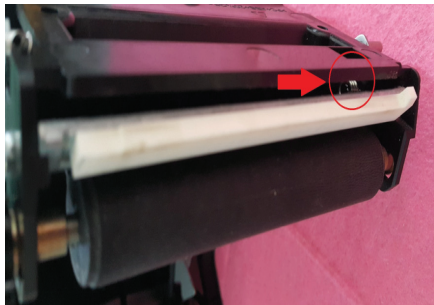


Fig 26



Fig 27

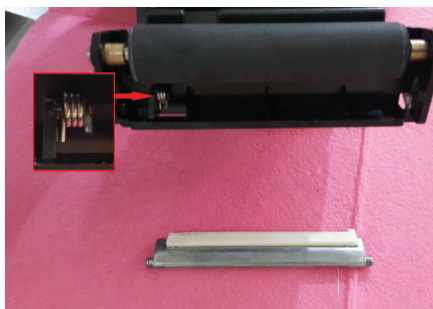


Fig 28

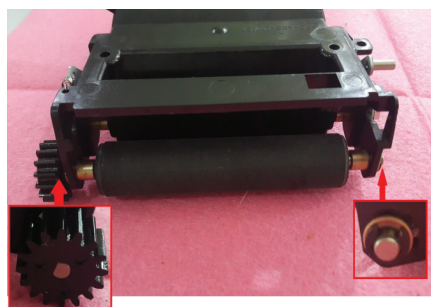


Fig 29



Fig 30



## Change Power Button

- 1) For change the power button, press and hold Both side clip and push power button out. Ref Fig 31
- 2) Power button is removed. Ref fig 32

## Change Change Motor

- 1) Printer have two motor. Ref Fig 33
  - A) Mechanism motor B) cutter motor
- 2) Unscrew two screw, motor will remove. Ref Fig 34

## Change Print Head

- 1) For remove print head, take out the two spring. Ref Fig 35
- 2) Push the clip on the chassis. Ref Fig 36
- 3) Print head is removed. Ref fig 37

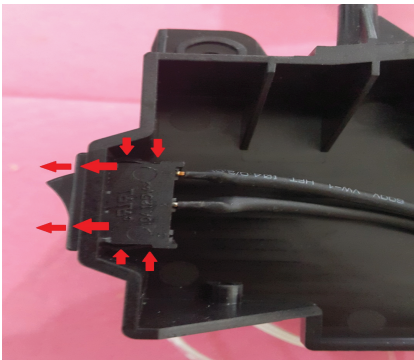


Fig 31



Fig 32

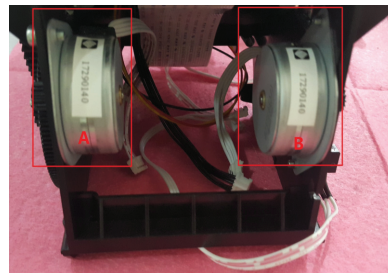


Fig 33



Fig 34

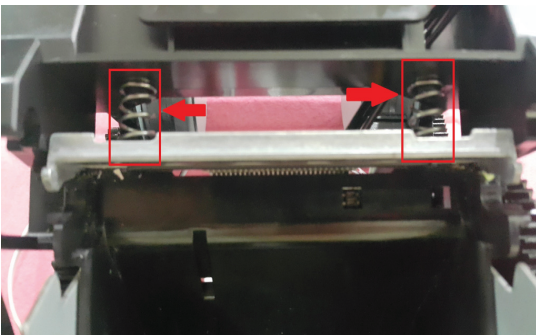


Fig 35

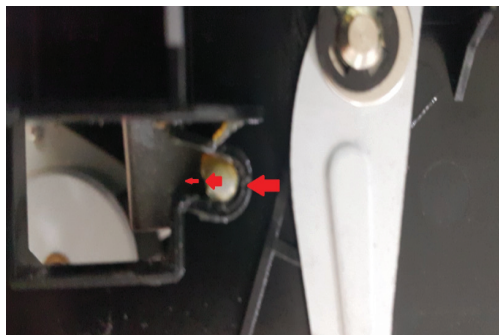


Fig 36



Fig 37