

GP- 4232D Printer Driver Installation Guide

- 1) Run the "Printer Driver" on the CD. Ref Fig 01.
- 2) Please Click "Accept" for the agreement and Click Next. Ref Fig 02
- 3) Use the default directory and click Next. Ref Fig 03
- 4) Click Finish for Next step. Ref Fig 04
- 5) Select Install printer drivers. Ref Fig 05
- 6) Select USB and Click Next. Ref Fig 06

Remark : If Computer system cannot find the printer please add the driver manually.



Fig 01



Fig 02

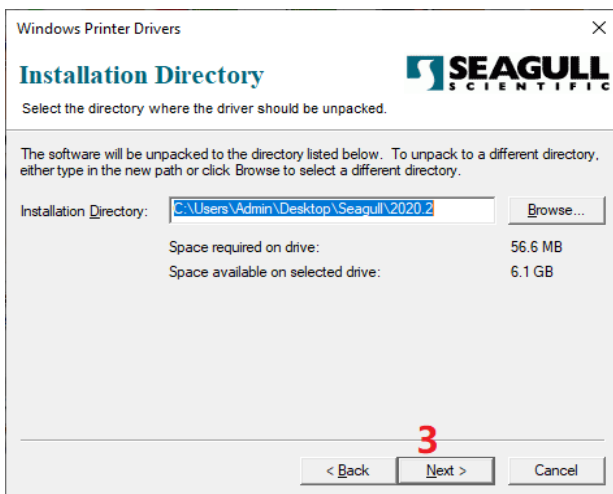


Fig 03

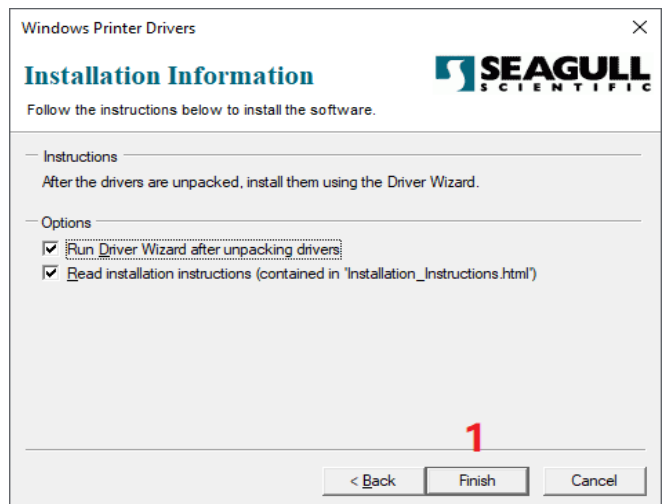


Fig 04

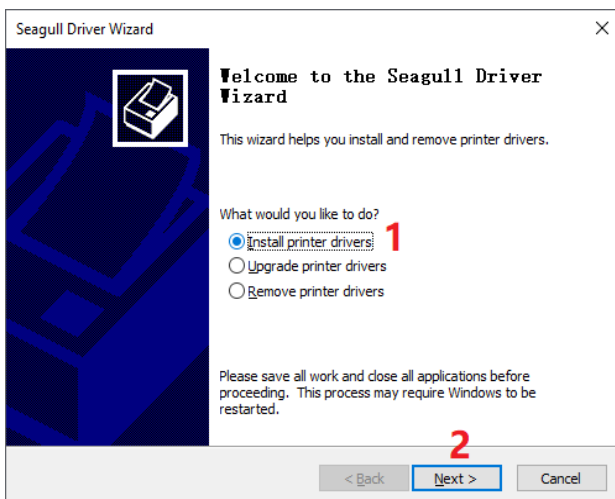


Fig 05

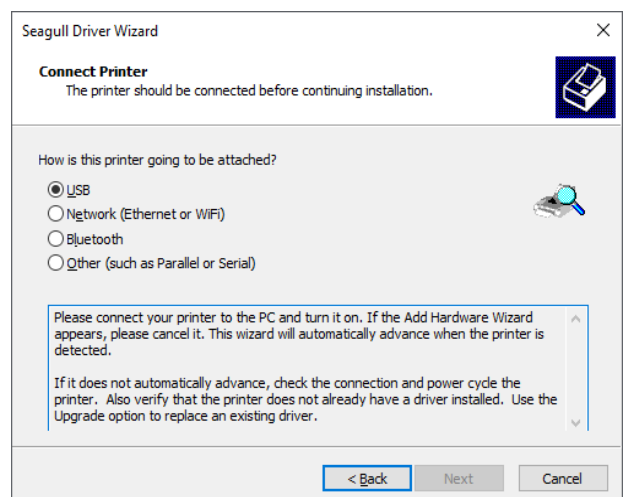


Fig 06

- 7) For manual install, need to select " Other " and click Next. Ref Fig 07
- 8) Select printer manufacturer "Gprinter" and select model "Gprinter S-4232D". Ref Fig 08
- 9) Select the right USB port and Click Next. Ref Fig 09
- 10) Can rename for the printer and share the printer. Ref fig 10
- 11) Complete installed, click Finish. Ref fig 11

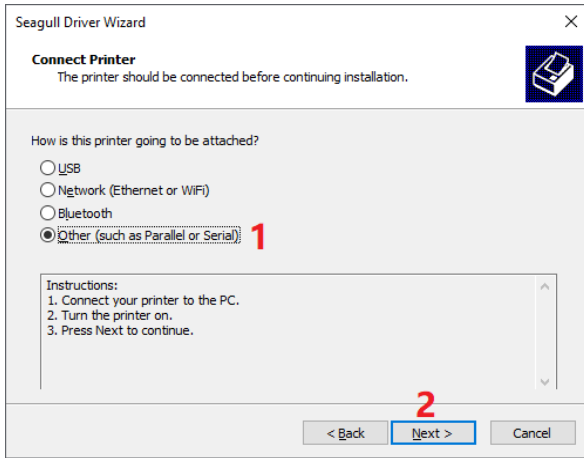


Fig 07

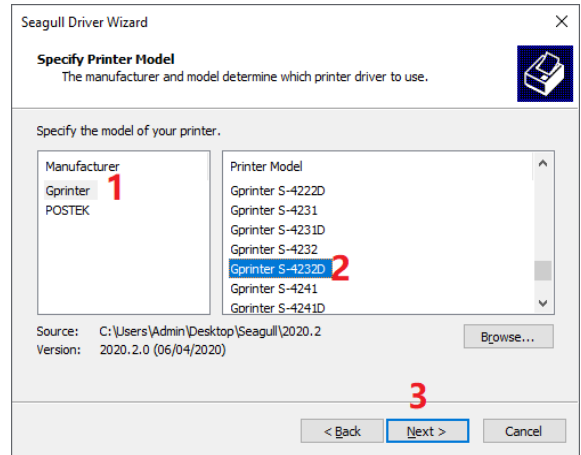


Fig 08

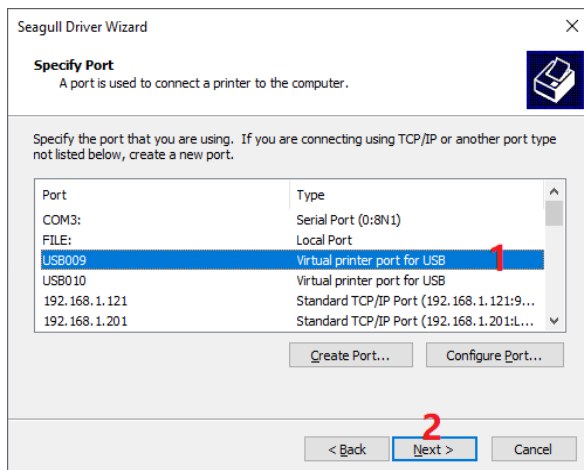


Fig 09

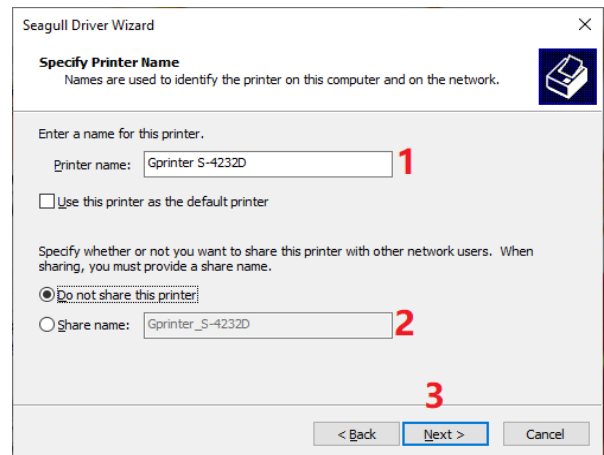


Fig 10

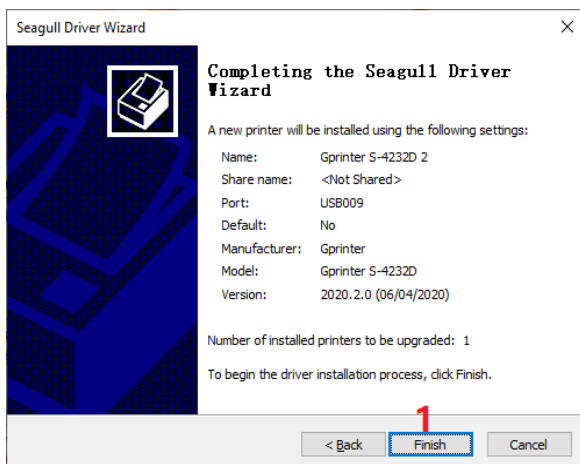


Fig 11

Printer Driver Setting

On Printer Driver, please follow the Fig 12 and Fig 13 to do the setting .

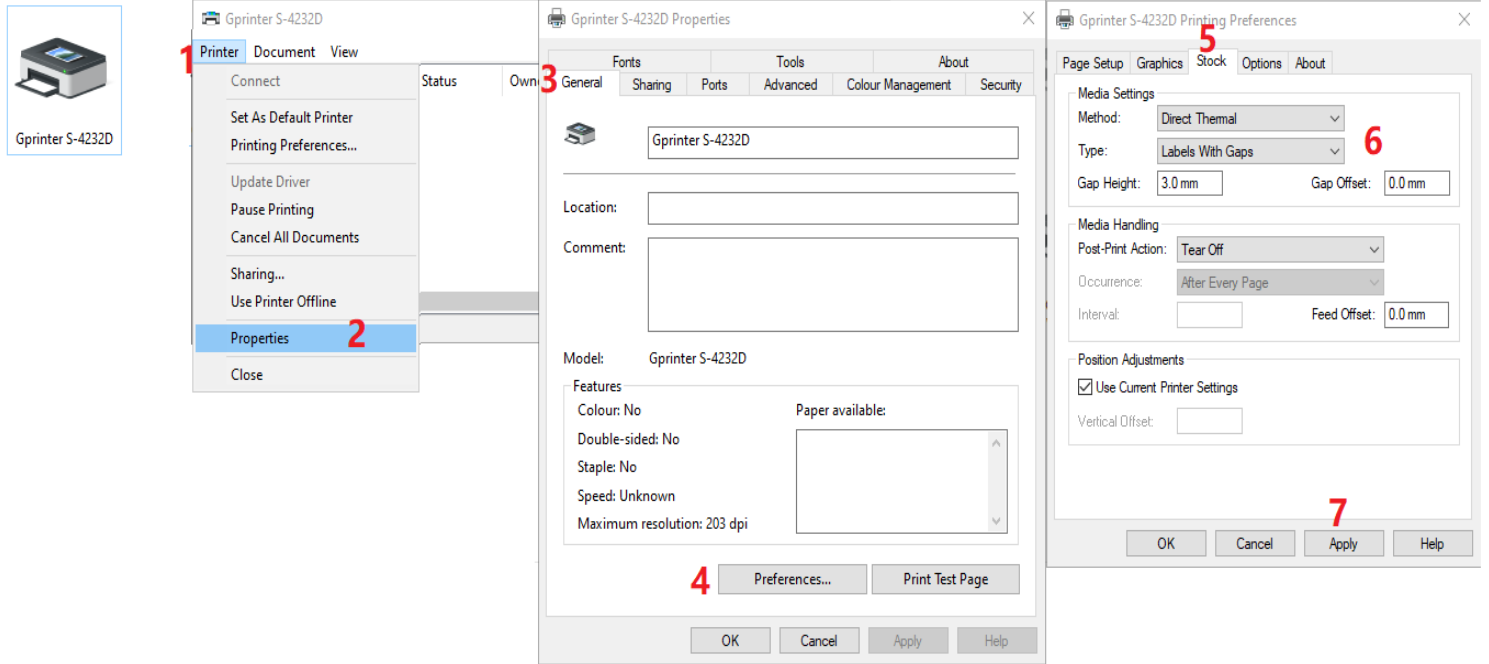


Fig 12

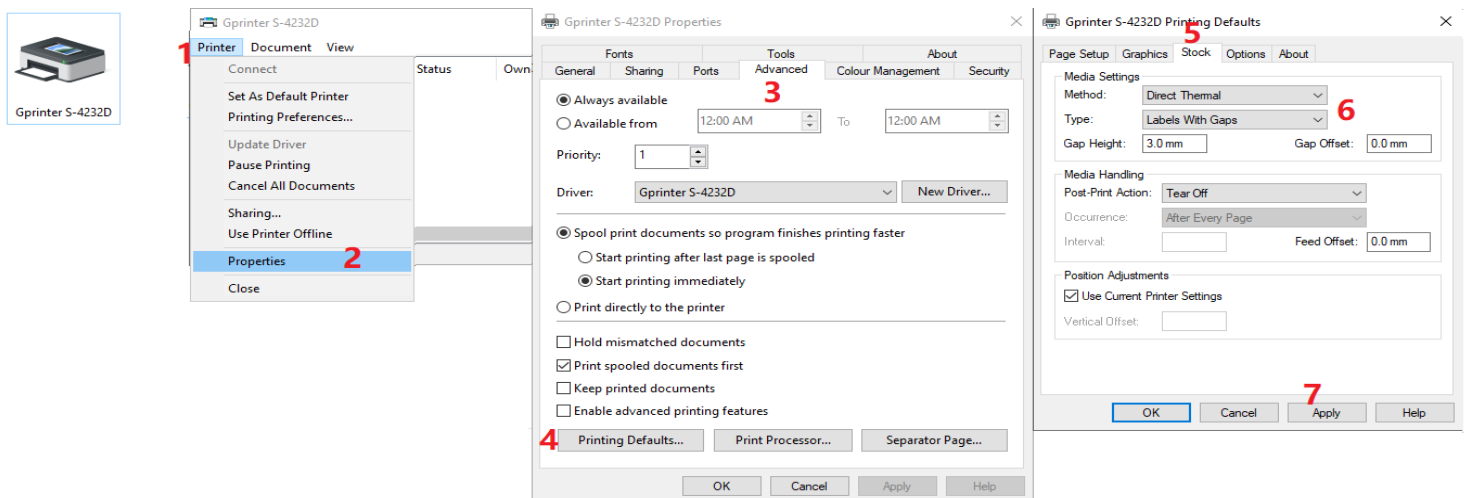


Fig 13

Design Software Installation.

- 1) Double click the Design software icon. Ref Fig 01
- 2) Select the language and click OK. Ref fig 02
- 3) Show the version and click Next. Ref Fig 03
- 4) Please Click Accept for the agreement and Click Next. Ref Fig 04
- 5) Select the installation folder and Click Next. Ref Fig 05
- 6) Ready to install, click Next for install. Ref Fig 06
- 7) Once confirm all, Click Finish for install. Ref Fig 07



Fig 01

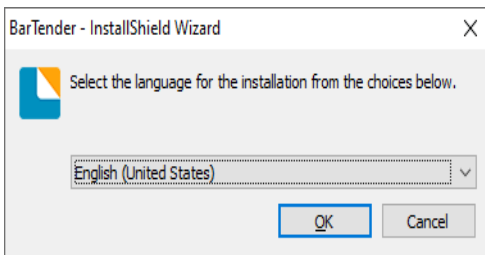


Fig 02



Fig 03

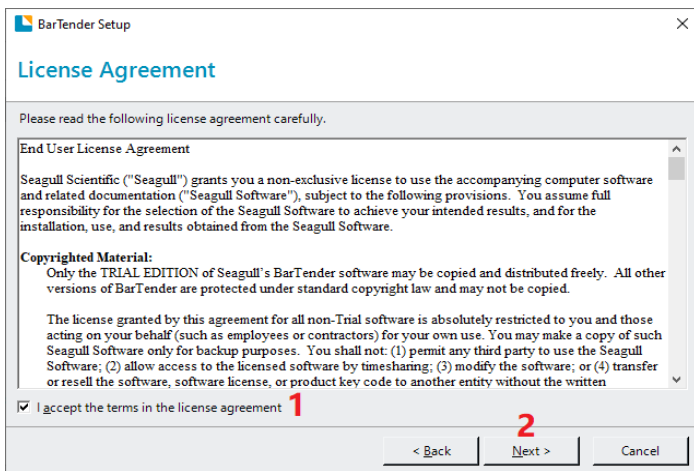


Fig 04

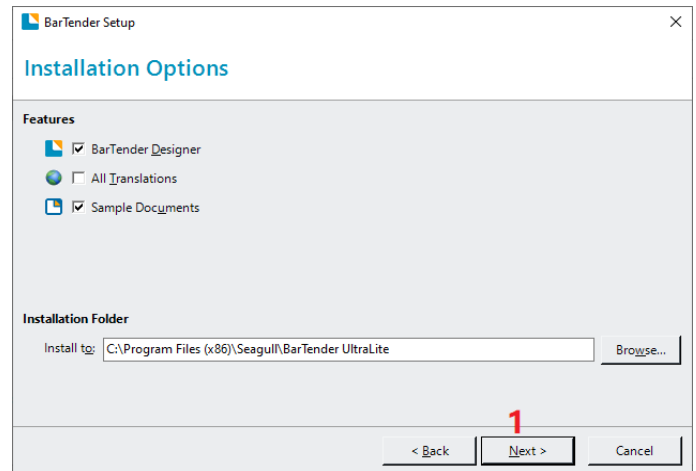


Fig 05

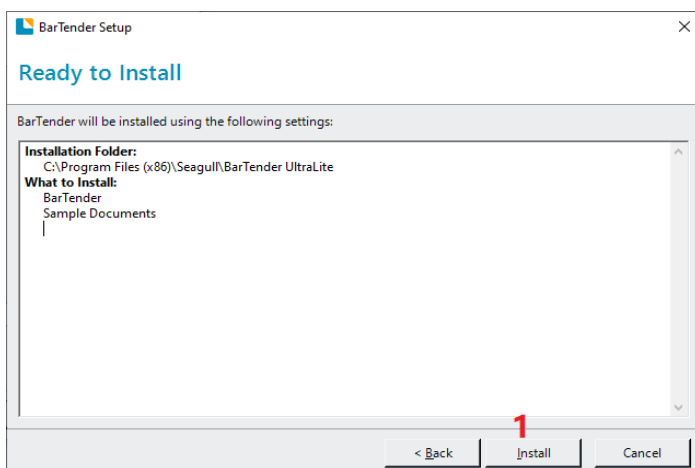


Fig 06

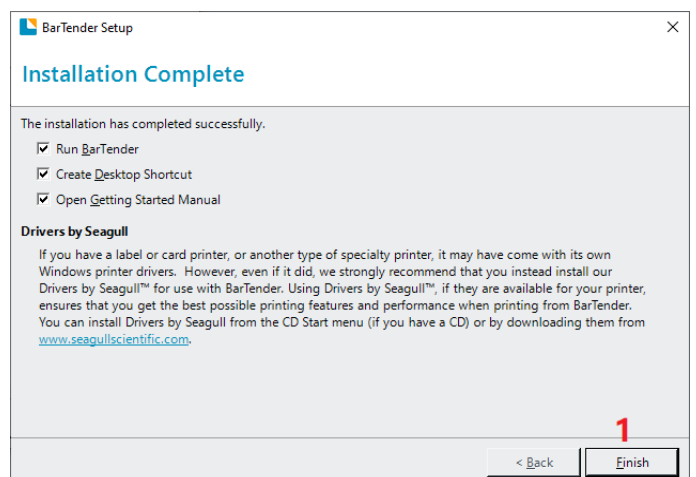


Fig 07