

T4+

Printer Overview THE ONE YOU CAN RELY ON

Mechanical features



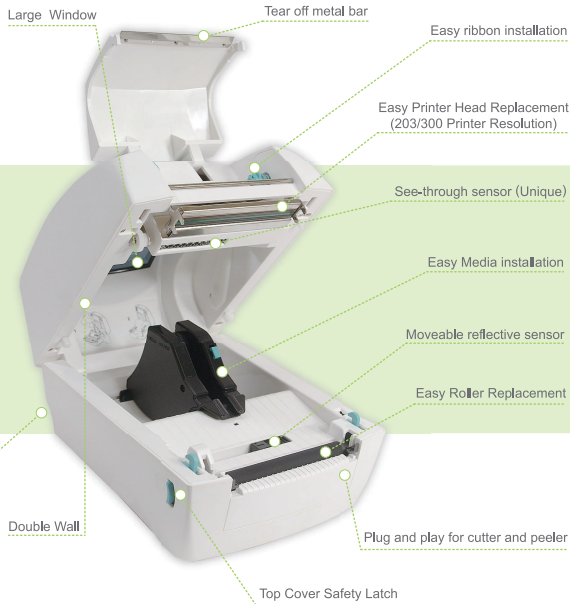
Graphic LCD



4 function buttons + flash indication



See-through sensor (Auto Detection)



Large Window

Tear off metal bar

Easy ribbon installation

Easy Printer Head Replacement (203/300 Printer Resolution)

See-through sensor (Unique)

Easy Media installation

Moveable reflective sensor

Easy Roller Replacement

SD card Slot

Double Wall

Plug and play for cutter and peeler

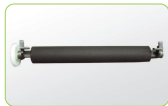
Top Cover Safety Latch



Micro SD card Slot(Up to 32 GB)



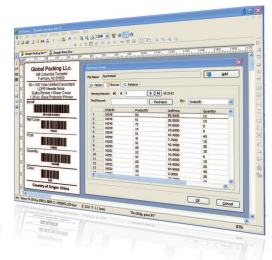
Full communication ports



Easy Roller Replacement

Software features

- Firmware Software
- Professional Edition Features (Database and 2-D Barcode)
- Multilingual Interface
- Support labels and forms making
- A full range of tools (PrinterTool, FWTool, DriverSetup...)

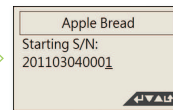


Multi-function stand-alone operation Features

- No PC Operating.
- Easy Forms Update and Easy Data Storage via Micro SD card
- Variety of external devices connections (USB-KeyBoard, USB-Scanner, Scale, Counter...)
- BarDrawer easily edit form
- Convenient form operation
- Multilingual LCD display



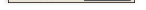
Form List



Form Content



Multilingual LCD Display



Specifications

CPU AND MEMORY

- CPU : 32-bit CPU
- 128 SDRAM, 128 Flash ROM, micro SD slot (Up to 32GB)

PRINT

- RESOLUTION : 203 dpi/300 dpi
- PRINT MODE : Direct Thermal and Thermal Transfer
- PRINT SPEED : 1" to 5" ips (203dpi), 6" ips (Option)
- MAX. PRINT LENGTH : 150 inches
- PRINT WIDTH : 4.1" (104mm)
- BARCODE :
 - 1D : Code39, Code93, Code128 UCC, Code128 auto, Codabar, EAN8, EAN13, Interleaved 2 of 5, UCC/EAN 128, UPCA, UPC E, UPC Interleaved 2 of 5
 - 2D : Data Matrix, MaxiCode, PDF417
- FONT :
 - 5 internal expandable bitmap fonts (alpha-numeric)
 - 2 internal expandable bitmap fonts (numeric only)
 - Downloadable soft font
 - 4 directions : 0, 90, 180, 270 degrees
 - IMAGE : PCX, Direct binary graphic
- SENSOR TYPE : Moveable reflective and see-through sensor, Cover open sensor, ribbon sensor

DISPLAY : Backlight LCD display 128x64 dots

CONTROL PANEL : 4 multi-functional keys, 4 status LED light, 1 error LED light

MEDIA

- WIDTH : 0.59"-4.33"(15mm-110mm)
- MEDIA ROLL DIAMETER : ID-1" (25.4mm)/OD-Max. 5"(127mm)
- MEDIA THICKNESS : 0.002" (0.06mm) to 0.0075" (0.2mm)
- MEDIA TYPE : Continuous, die-cut, tag, fan-fold, black mark

RIBBON

- WIDTH : 1.0" (25.4mm) to 4.3" (110mm)
- RIBBON ROLL DIAMETER : ID - 0.5"/OD - 1.535"
- RIBBON LENGTH : Max. length - 100M
- RIBBON TYPE : Wax, wax/resin, resin

INTERFACE : Serial, USB master and slave, Ethernet 10/100Mbps (option)

POWER : Switching power adapter - Input : 100 to 240V/Output : 24V

AUDIO : Beep sound when error occurs

OPTION : Wifi, Bluetooth, stacker, Peeler kit, Cutter, Ethernet module

OPERATING TEMPERATURE : 5°C to 45°C(40°F to 112.9°F)

PRINTER DIMENSION : 200(W) x 263(L) x 188(H) mm, Weight : 2KG

CERTIFICATION : CE, FCC class B, CCC, CB

Specifications subject to change without notice. Copyright 2018, Sbarco Technology Co., Ltd.
All right reserved. SBARCO is a registered trade mark of Sbarco Technology Co., Ltd.

Option

Cutter



Peeler



Ethernet



SBARCO
THE ONE YOU CAN RELY ON



THE ONE YOU CAN RELY ON

T4+

Modern Shape, Unlimited Applications
Multi-functions label printer

SBARCO Technology Co., Ltd.

Add : 4F., No.115, Lide St., Zhonghe Dist., New Taipei City 235, Taiwan (R.O.C.)

Tel : 886-2-3234 3098 Fax : 886-2-3234 1700 Website : www.sbarcotech.com

