



Company Profile

Code Soft group of companies

Code Soft International

Code Soft International Information Co Ltd, incorporated in 2001, a wholly owned subsidiary of Mindeo Electronic Group (listed in Shenzhen Stock Exchanged market) . Code Soft International is a leading AIDC (automatic identification and data collection), POS (Point-of-Sale) and RFID (Hardware and Software) Solution provider. The company grew with a strong R&D background and the whole team is committed to stay at the leading edge of the Auto-ID, POS and RFID technology sphere. Our products include POS Systems, Mobile Computer, Barcode Scanners, Barcode Printers, Receipt Printers, RFID Terminal and Printer , Customer Displays, Touch Screen Monitors, Cash Drawers, Programmable Keyboards, and many other POS peripheral devices.

To date, our products are actively distributed in the South East Asia Region (consisting of Malaysia, Singapore, Indonesia, Thailand, Brunei, Vietnam, Cambodia, Myanmar, Philippines), China, Hong Kong, Macau and India.

A close-up photograph of a person's hand in a white shirt pointing towards the right. The background is blurred, showing more of the person's torso and another hand holding a device.

About Us



Our Mission

Code Soft group of companies

- To become the leading global provider of Auto-ID ,RFID and Point of Sales solutions in the market
- To provide high value added products and services
- To excel overall customer's expectation and satisfaction

Codesoft Global Presence

- Codesoft Office 
- Factory 
- Distributors / Partners 

Our production plant, located in Shenzhen, China with over 150 personnel and an in house team of engineers in R&D. All our products are meticulously tested for reliability and durability.

Our Factory





Code Soft Product

All About Solution



Barcode Scanner

1D SCANNER



2D SCANNER



CS-6600 2D Imager Scanner



Mechanical & Electrical

Dimensions	90mm (H) x 62.8mm (W) x 153mm (D)
Weight	132g (without cable)
Cable	Straight 2.0 meters
Interface	USB, RS232, USB virtual COM
Operating Mode	Hand-Held, Auto-Detect
Programming Method	Manual (reading configuration barcode)
Indicator	Beeper & LED

Electrical

Input Voltage	5.0 ± 0.25VDC
Current	Standby : 160mA, Operation : 300 mA (Max. 480 mA)

Performance

CPU	32-bit ARM Microprocessor
Scan Pattern	Image
Image Size	1280 x 800 pixels
Light Source	Illumination : 5000 K, white LED ; Aiming: 525 nm peak wavelength, green LED
Scanning Angle	±60°, ±40°, ±360° (skew, pitch, roll)
Field of View	Horizontal: 40°, vertical: 30°
Print Contrast	20% minimum reflectance difference
Decode Capability	All common 1D / 2D barcodes

Environmental

Operating Temperature	-10°C to 50°C / 14°F to 122°F (operating); -20°C to 70°C / -4°F to 158°F (storage)
Humidity	5% to 95% (non-condensing)
	EMC: EN55022, EN55024
Safety	Photo-biological Safety: EN62471 illumination: 100,000 lux
	Sealing - IP52 Drop Resistance - Withstand multiple 2.0 m (6.6 ft.) drops to concrete

[Notice] : Specification are subject to change without notice.

Mobile Terminal

Bluetooth



Mobile Computer



Mobile Rugged Tablet



Receipt Printer

Desk Top 2"



Desk Top 3"



TP 3260VL Receipt Printer



Mechanical

Print Method	Direct thermal line
Printing Width	64mm or 72mm
Printing Speed	260mm/second
Auto Cutter	Full or Partial Cut
Dot Density	512dot/line or 576dot/line
Paper	79.5±0.5mm (width), 0.06~0.08mm (thickness), 80mm (roll diameter)
Interface	Serial+USB+Ethernet
Command	ESC/POS command
Character Size	ANK Font, Font A: 1.5x3.0mm (12x24dots), Font B: 1.1x2.1mm (9x17dots), Chinese Font
Data Buffer	128k bytes
Barcode Type	UPC-A /UPC-E /EAN13 /EAN8 /CODE39 /ITF /CODEBAR /CODE93 /CODE128 / QR Code
Operating Temperature	0°C to 45°C (operating); -10°C to 60°C (storage)
Print Head Life	100km
Cutter Life	1.5 million cuts
Weight	1.5kg

Electrical

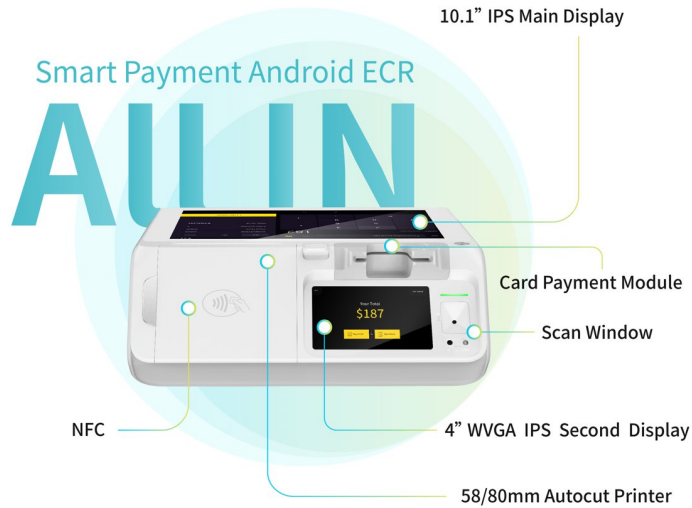
Power Input	DC 24V/2.5A
Power Supply Input	AC 110V/220V, 50-60Hz
Cash Drawer Input	DC 24V/1A

POS Terminal

WINDOWS OS



ANDROID OS



TCP-1510 AIO POS Terminal



TCP-1510

Specification

Size	15 inch
CPU	Support Intel Baytrail Celeron J1900
Memory	DDR3 4GB, 8GB (Optional)
SSD	mSATA, 128G, 256GB, 512GB (Optional)
GPU	Intel HD Graphics
Interface	5*USB2.0 port 1*USB3.0 port 1*LAN port 2*COM port 1*VGA port 1*Audio OUT port 1*Audio.IN port 1*DC port
Power supply	DC 12V 5A power supply
Touch	Capacitive 10 point touch
OS Support	Windows/Linux
Resolution	1024*768
Whole size	344(L)*272(W)*44(H)(mm)
Net Weight	4KG

Integration Options

Customer display	VFD 20x2
Second display	9.7 inch / 15 inch monitor
MSR	Tracks 1/2/3
Stand	Stand for one screen , Stand for dual screen
Function Options	WIFI, Bluetooth

[Notice] : Specification are subject to change without notice

TCP-9015N AIO Industrial Terminal



TCP-9015N

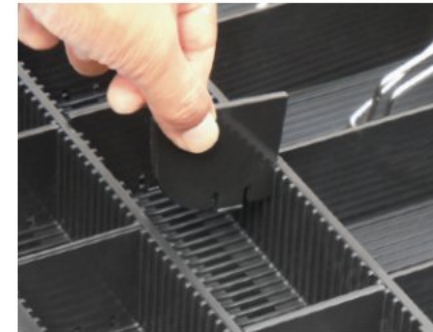
Specification	D36	D66U
CPU	Intel Bay Trail Celeron J1900 2.4 GHz	Intel Skylake U i3-6100U 2.3 GHz Intel Skylake U i5-6200U 2.3 GHz
Memory	1 x 4GB DDR3L SO-DIMM up to 8GB	
Storage	1x 2.5" 500GB SATA HDD or 128GB SSD	
Touch	True Flat PCAP Touch	
Display	15" LED	
Resolution	1024 x 768	
Brightness	300 nits	350 nits
I/O Ports		
USB 3.0	1	4
USB 2.0	4	2
Cash Drawer Port	1 (RJ11 12V/ 24V)	
Serial Port	3 (RJ45 with DC 5V/12V selectable)	
Audio Port	1	
VGA Port	1	
LAN Port	1 (RJ45)	
Optional I/O Port	1 x 12V, 1 x 24V (Powered USB)	
Optional Peripheral		
MSR	ISO Track 1/2/3 (USB)	
Second Display	8.4" / 10.1" without touch	
Customer Display	LCM display 2 x 20 characters (USB)	
Security	iButton / Fingerprint Reader (USB)	
WiFi Kit	802.11 b/g/n WLAN card & Antenna	
Second Storage (D66U Only)	128GB module type SSD with bracket (No raid function)	
Environment		
Operating Temperature	0°C ~ 35°C	
Storage Temperature	-20°C ~ 60°C	
Humidity	20% ~ 80% RH non-condensing	
Certificate		
EMC & Safety	FCC Class A, CE Mark, LVD	
Electrical		
Power Supply	65W / 19V (120W /19V with PUSB 12V & 24V)	
Physical		
Dimension	360mm (W) x 210mm (D) x 316mm (H)	
Weight	4.5kg	
Mounting	VESA Mount 100 x 100	
Operating System	Windows 7, POSReady 7, Windows Embedded 8.1 Industry, Windows 10 IoT Enterprise	

[Notice] : Specification are subject to change without notice

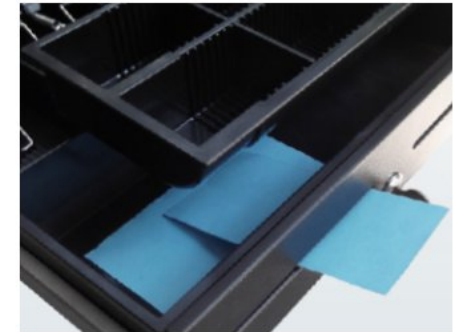
EC-410 Cash Drawer



✓ Removable Till & Coin Case



✓ Adjustable Bill & Coin Divider



✓ Two Media Slots



✓ Optional Item: Lockable Lid



✓ 1-100 Sets Different Code Key Lock



✓ Heavy Duty Ball Bearing Rollers, Enhance Durability & Lower Noise.

Label Printer

Easy Bar



Gprinter

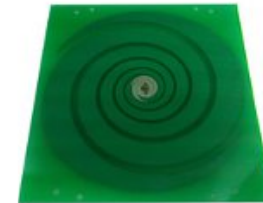


RFID Reader & Antenna

RFID Reader



Antenna Reader



POSTEK RFID Printer



Ge Series (UHF RFID)
203dpi | 300dpi | 600dpi



TXR Series (UHF RFID)
Standard version | On-metal version

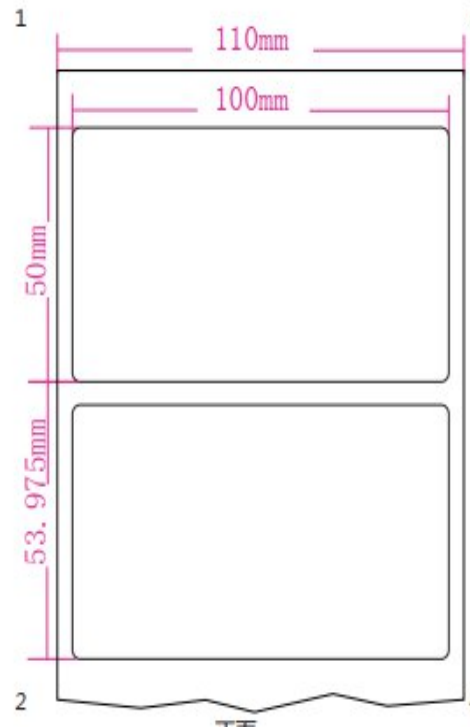
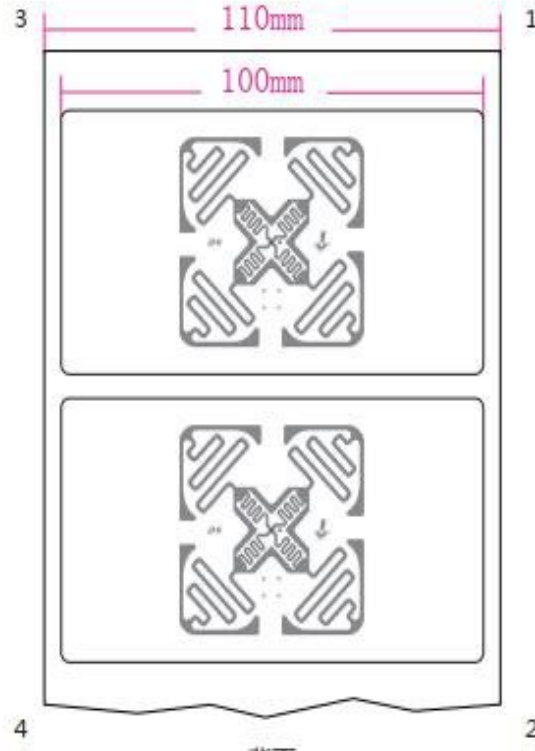


Je Series (HF RFID)
203dpi | 300dpi

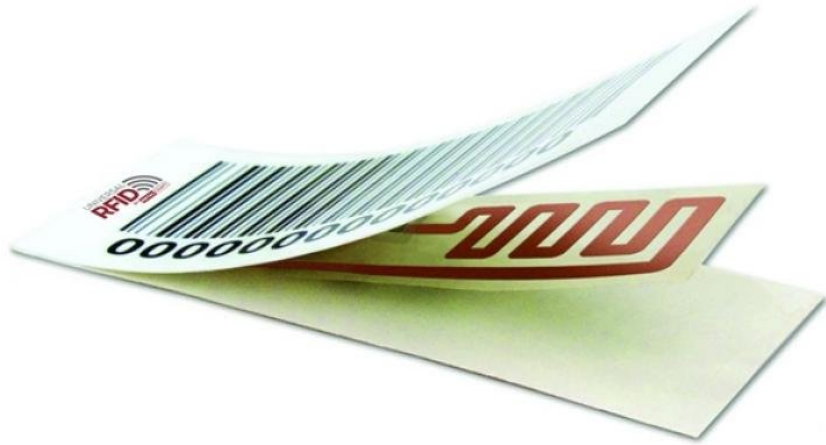
RFID Label

1) Normal RFID Label.

2) Metal RFID Label.



RFID Specifications



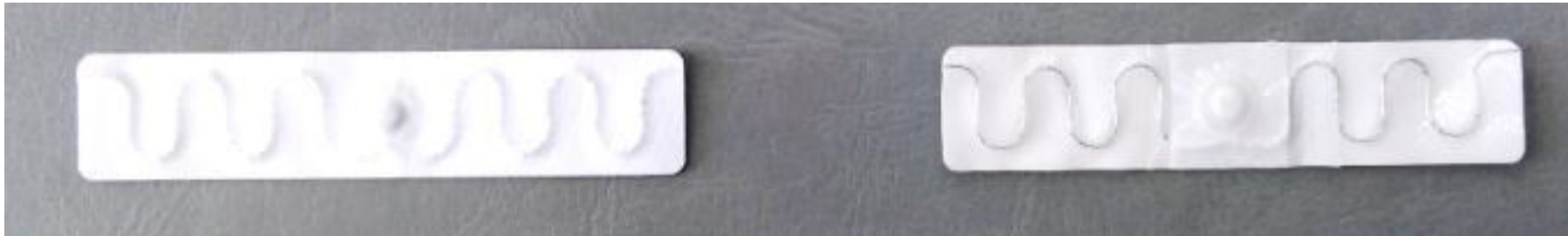
Item		Description	Remarks
Product		Blank Label	
Label Size		100*50mm	
Antenna Size		44*44mm	
Chip		Impinj Monza 4QT	
Memory	EPC	128 Bits	Read & Write
	TID	96 Bits	Read Only
	User	512 Bit	Read & Write
Frequency		920~925 MHz	
Read Range		6m	Depend on Readers
Operation Mode		Passive	
Data Retention		10 years	
Programming		100,000 cycles	
Surface Material		Coated Paper	
Delivery Format		In Roll	2500pcs/roll

Specification for Textile Laundry Tag LTT7015

Product Description:

UHF Textile Laundry Tag, with more than 200 industrial washing cycle times, capable of 60 bar pressure, stable and reliable RF performance.

There are two kinds of types with different methods of assembly.



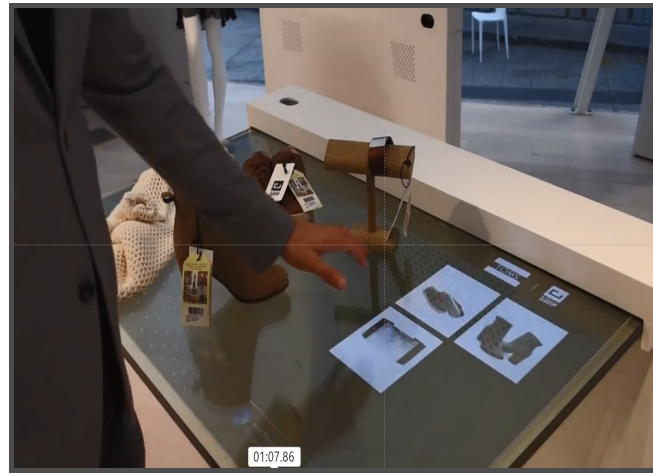
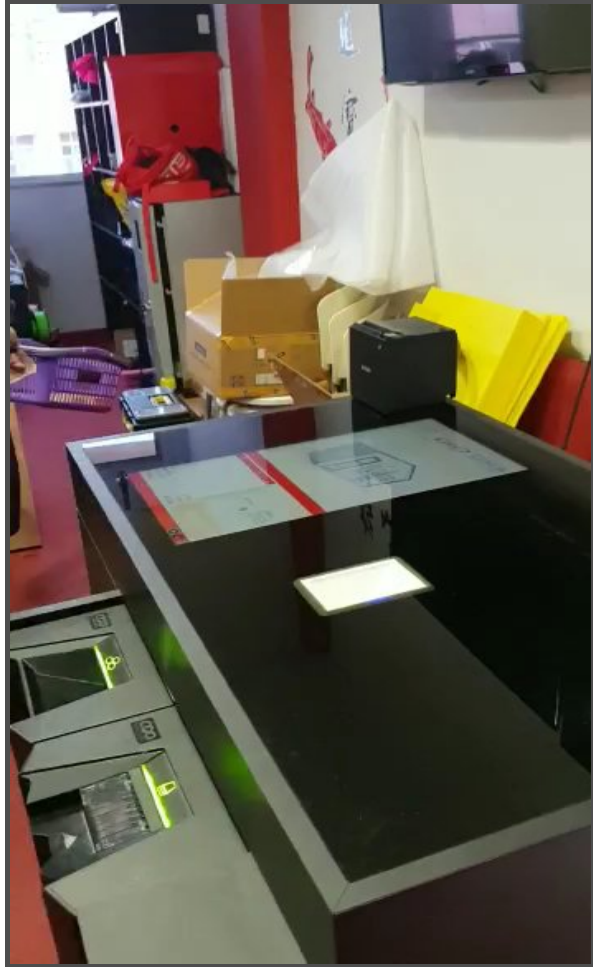
Type: LTT7015
Assembly method: Sewing

Type: LTT7015-H
Assembly method: heat sealing (Temp 218 @Time 15~20s@Pressure 0.4MPa) or sewing

Self Service Kiosk



Self Service - Cashless Kiosk – Table Top - Retail



- **Cashless Kiosk**
- Receipt Printer
- 21.5 " Screen with CPU
- Credit / Debit
- E Wallet
- Mobile Payment
- RFID Reading
- Product Information



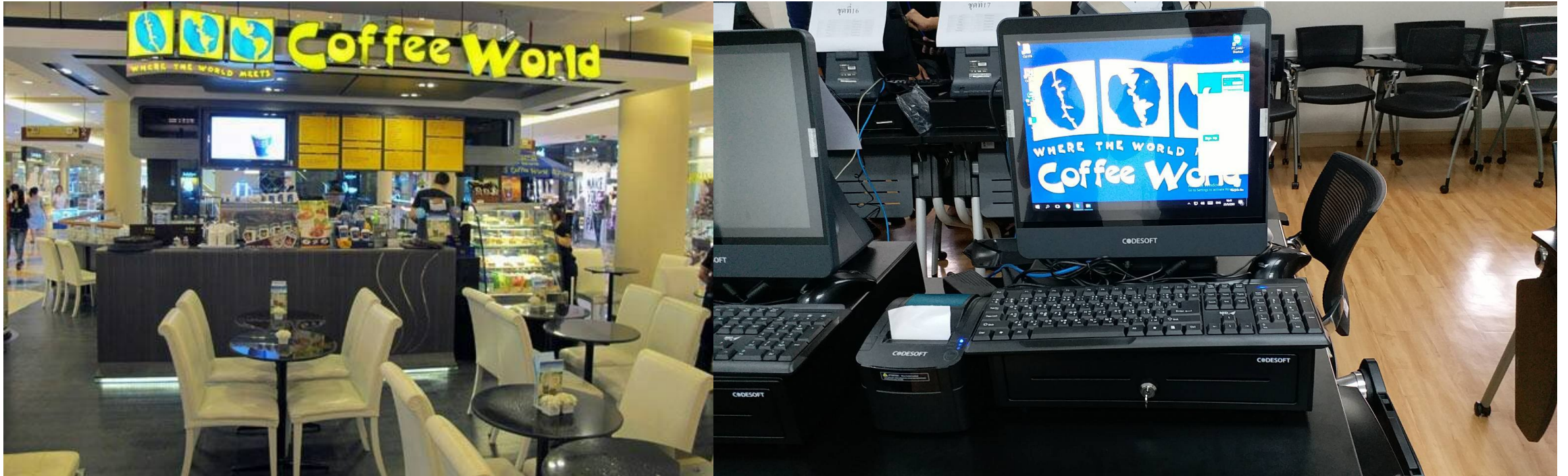
Customer Reference site

Product By Code Soft

Maxmart - Thailand



Coffee World - Thailand

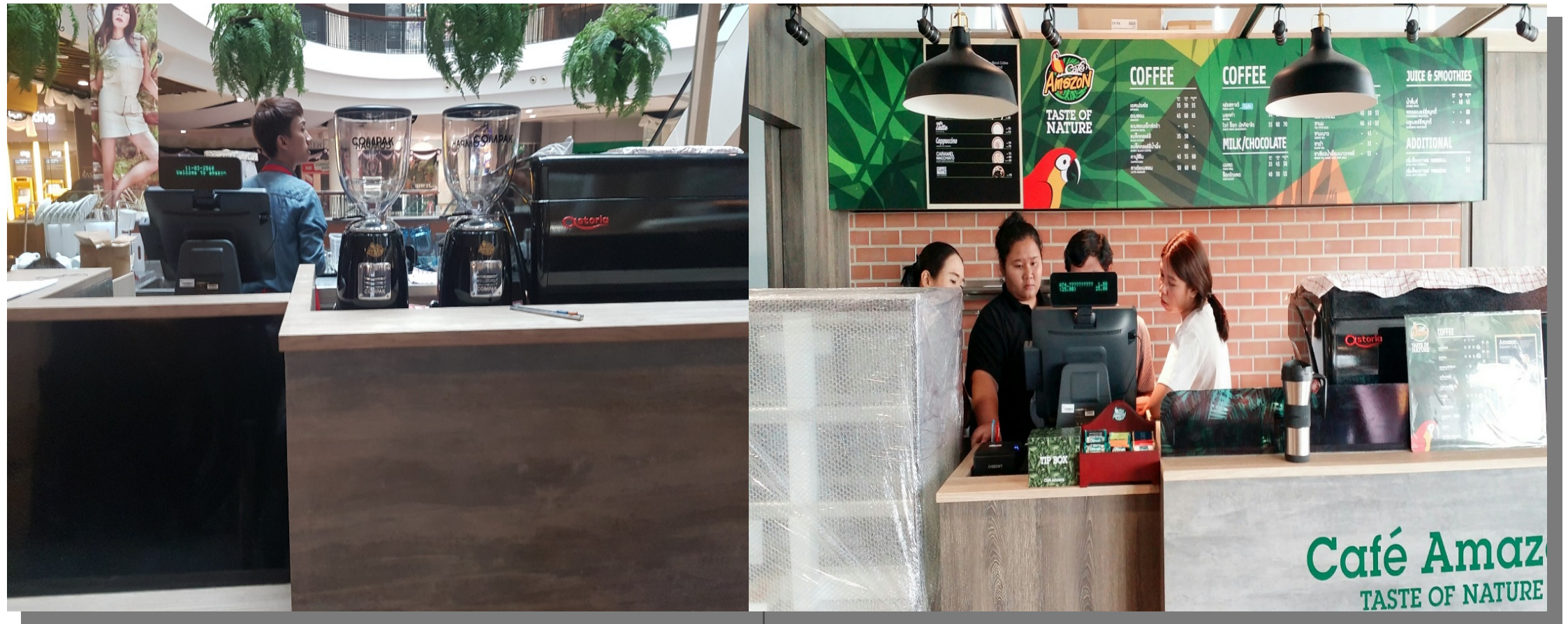


Texas Chicken - Thailand



Texas Chicken - Thailand

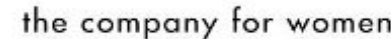
Amazon Coffee - Thailand



CJ Express, Nine Cosmetic & BAO Cafe' Thailand



Customer Reference : POS & Barcode



Customer Reference : POS & Barcode





Thank You

Ken Moo



+6016-3289197



kenmoo@code-soft.com



www.code-soft.com

